

39'-2 1/2"

NON-ACCESS STORAGE

Emergency Exit Pathway

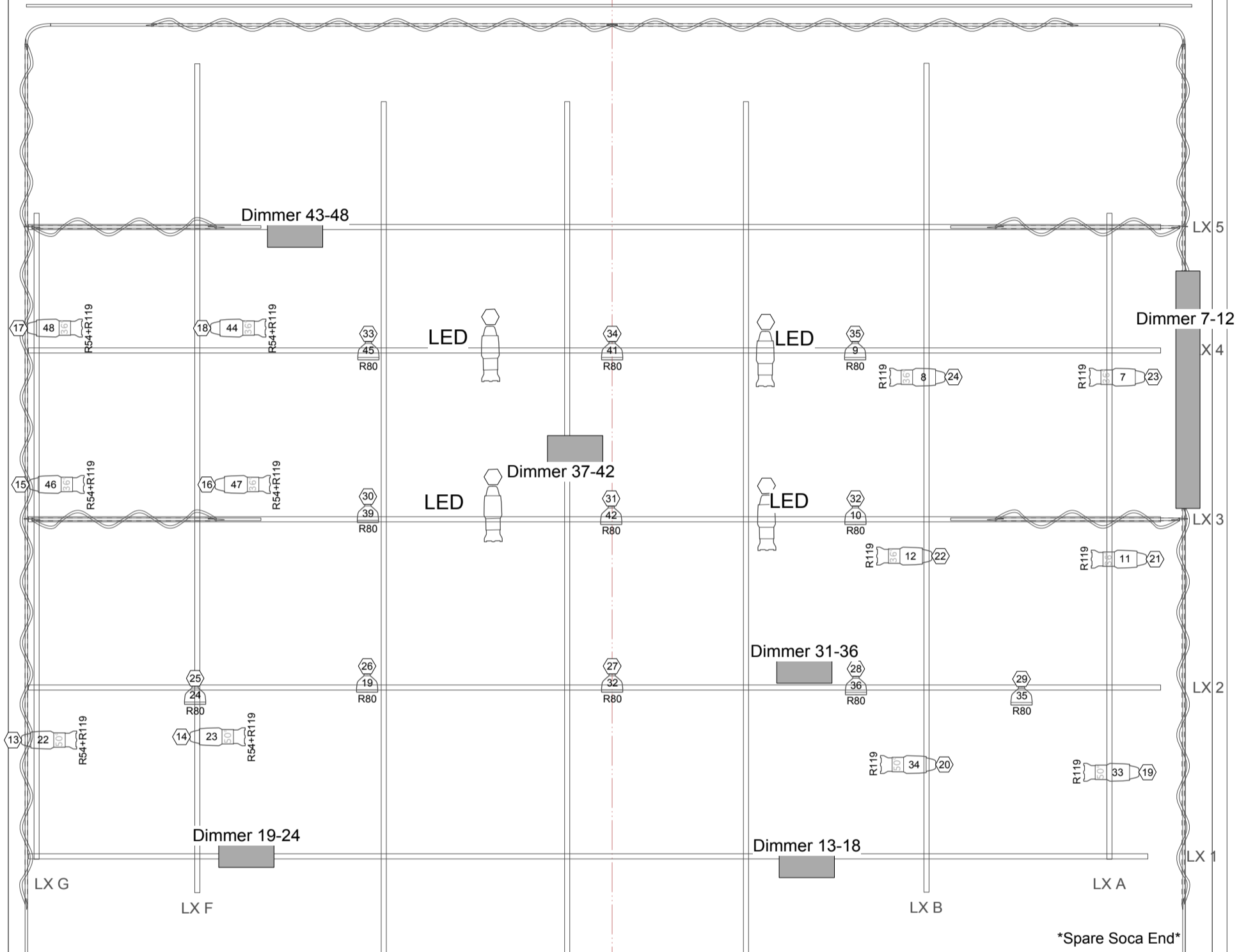
Ladder Storage

Scaffolding Storage

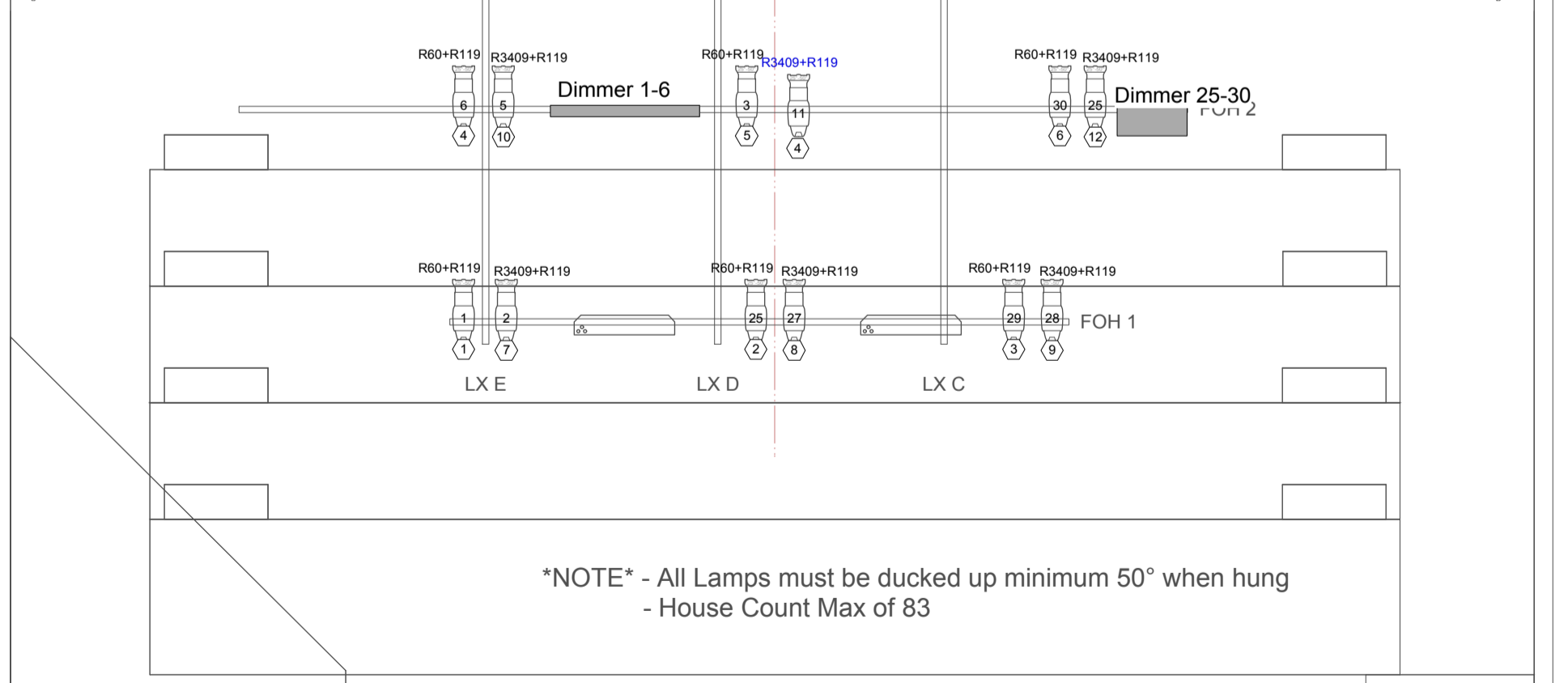
Short Pipe Storage

Boom Base Storage

Ramp



Spare Soca End



NOTE - All Lamps must be ducked up minimum 50° when hung
- House Count Max of 83

Add Ramp Here

| | | | |
|---------------|------------------------|---------------------------------|--------------|
| Drawing Title | | West Village Theatre House Plot | |
| Designer | Thomas Geddes | Scale | 1/4" = 1' |
| Drawn By | Thomas Geddes | Drawing No. | 1 of 1 |
| Venue | West Village Theatre | Date | August 22/16 |
| CAD File Name | WVT House Plot VWX2015 | | |